

## Table of Contents

Documentation.....	1
Unsigned drivers, Windows 8/8.1.....	1

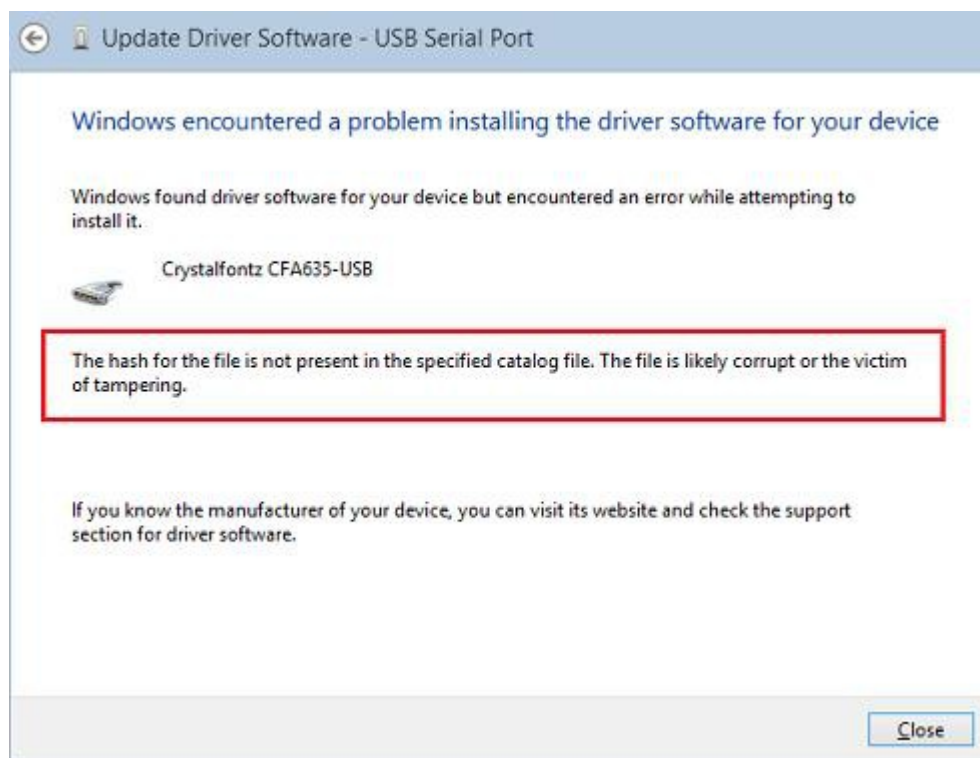
## Documentation

- Infinity-Box Corporate web site: [www.infinity-box.com](http://www.infinity-box.com)
- Images taken from <http://winitpro.ru>

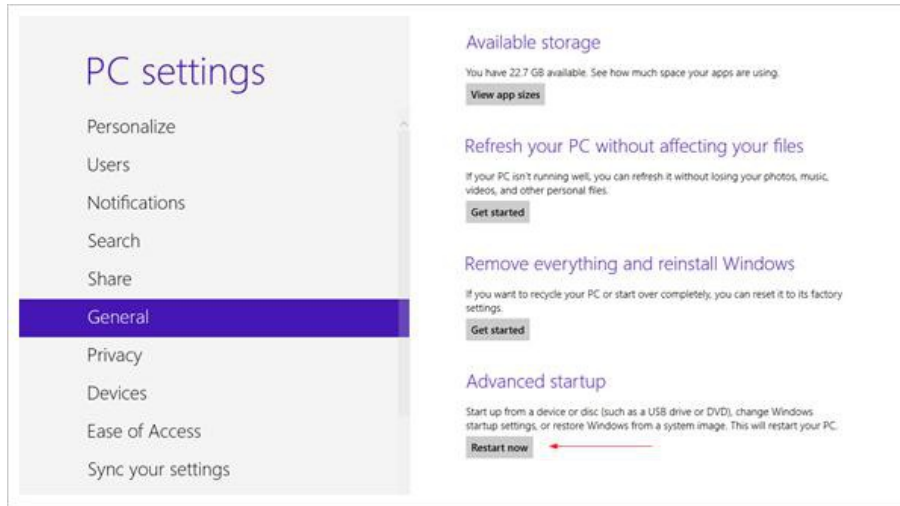
## Unsigned drivers, Windows 8/8.1

To install unsigned Smart-Card drivers under Windows 8/8.1 you can disable drivers signature verification.

*"Windows encountered a problem installing the driver software for your device. Windows found driver software for your device but encountered an error while attempting to install it. The hash for the file is not present in the specified catalog file. The file is likely corrupt or the victim of tampering."*

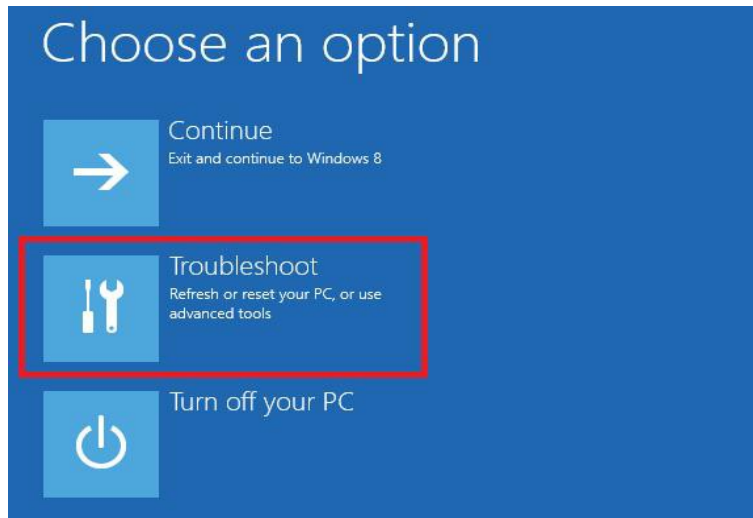


1. Press **Win+I** keys
2. Select **Change PC Settings** menu item
3. Go to **General** tab
4. Run **DongleManager.exe**
5. Select option **Restart Now**

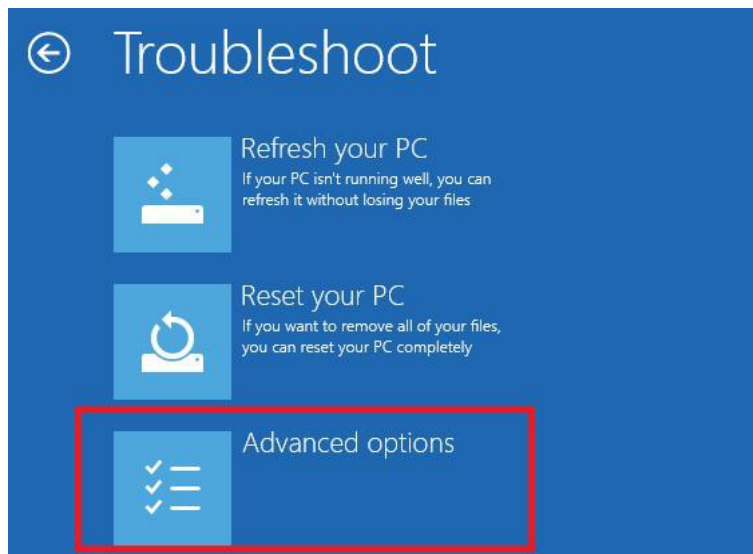


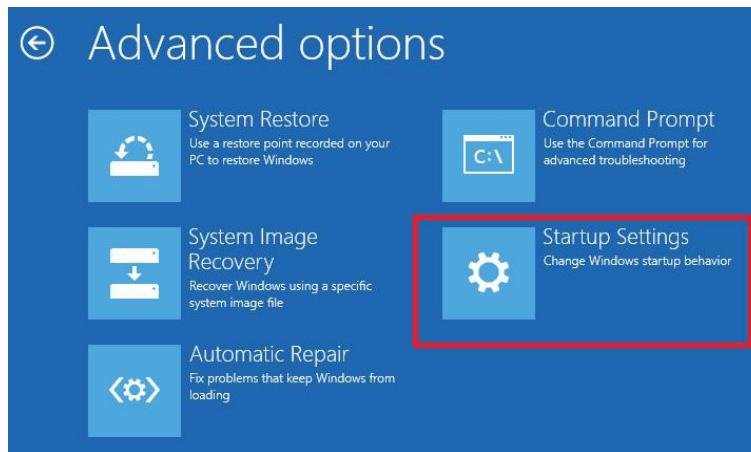
Alternative method for steps 1. - 5.: run from command prompt: `shutdown.exe /x /o /f /t 00`

6. PC reboot and you will see the next screen. Select **Troubleshoot**



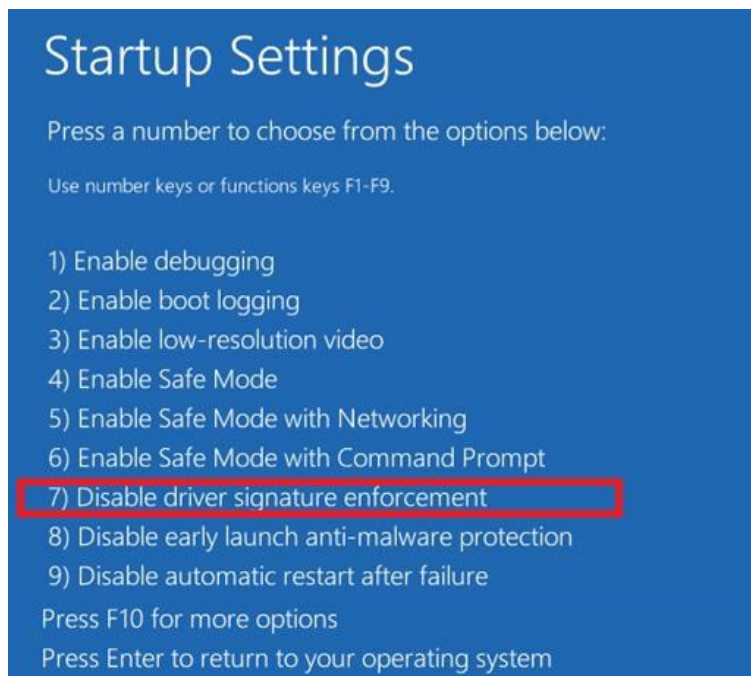
7. Select **Advanced options**



8. Select **Startup Settings**9. Select **Restart**

10. PC reboot once again and you will see **Startup Settings** window

11. Select **Disable driver signature enforcement** by pressing **7** or **F7** key



12. Now Windows should accept unsigned drivers installation. You will see warning message. Select **Install**

this driver software anyway.

