

CM2 Memory Tool: Full Control in your hands (Info & Manual)

According users request we introduce new useful stuff for CM2 modules: Memory Tool.

Abilities:

Read/Write/Erase/Verify custom regions of memory.

SW support binary files, raw(original) firmware parts flashing, including sparse and etc.

How:

Connect phone, init MemTool and do all, what you need. When work done - finish session.

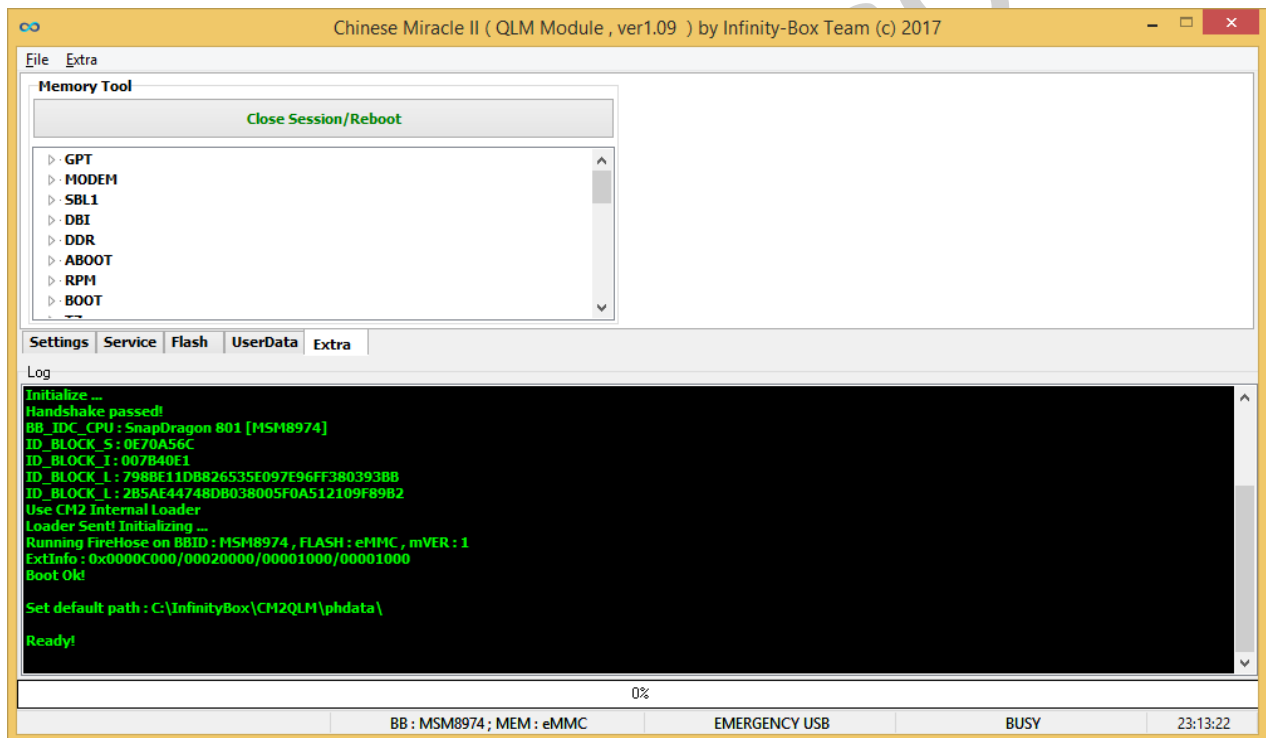
Why it need?

i.e. flash only system, modified boot, flash files from update.zip, work with different regions, forensic purposes, repair purposes, testing purposes and etc.

You NOT depend on need xml files and etc. Just do what you need here and now!

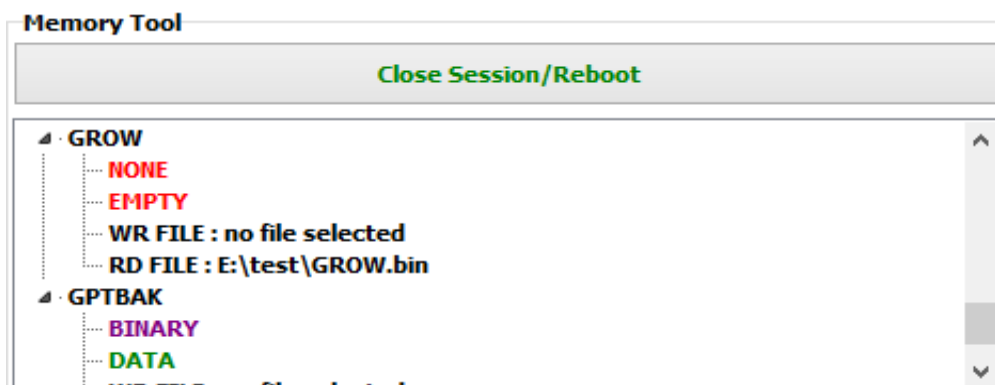
Manual:

After init MemTool and success connection you will see internal device structure.



You can check every element manually (i.e. empty or not, file system state for forensic and etc.)

Main Workplace Overview:



There are few fields for every part:

1. **TYPE**

BINARY- means some binary data present.

FILESYSTEM- means there is some of standard file systems data present

NONE- empty partition

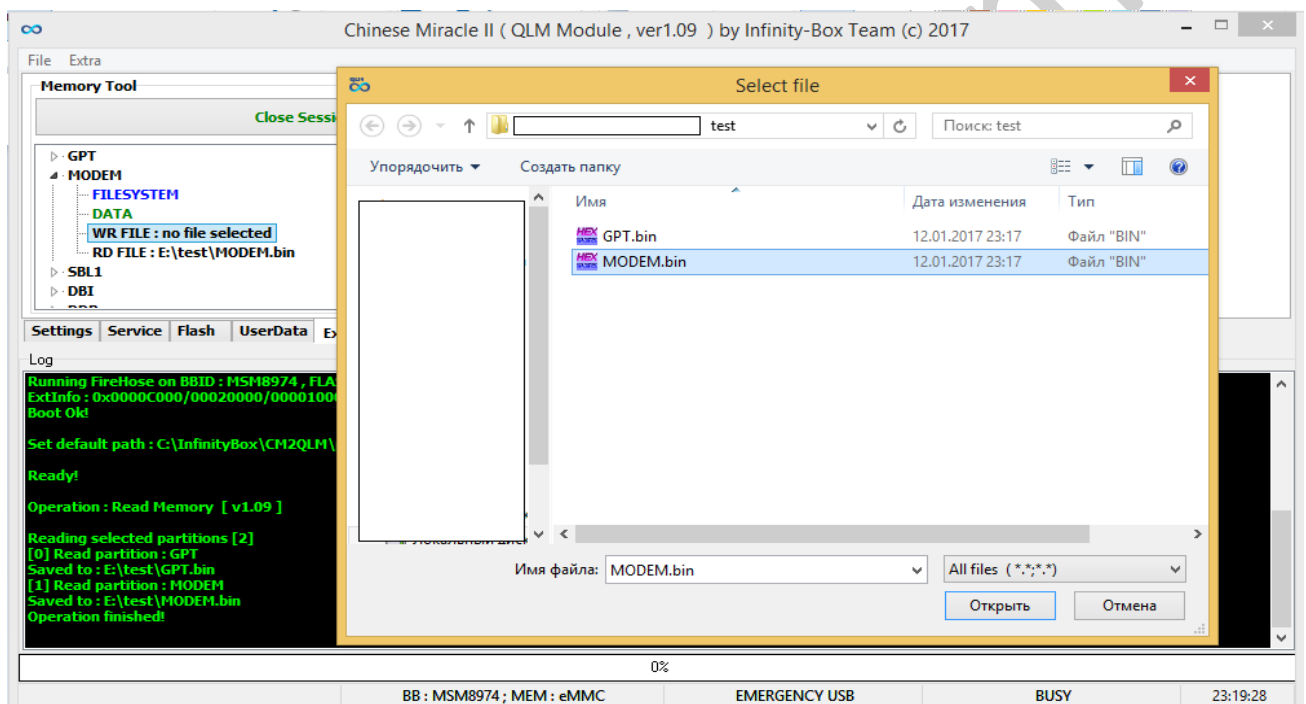
2. **STATE**

EMPTY - means there is no any data, partition empty

DATA - means partition NOT empty

3. **WRITE PATH**

Double press on **WR FILE** field to open File Open dialog.



You can press "**Cancel**" to make field empty. If field is "**NOT set**" - partition will be **ignored**, if it selected for **WRITE** operation.

4. **READ PATH**

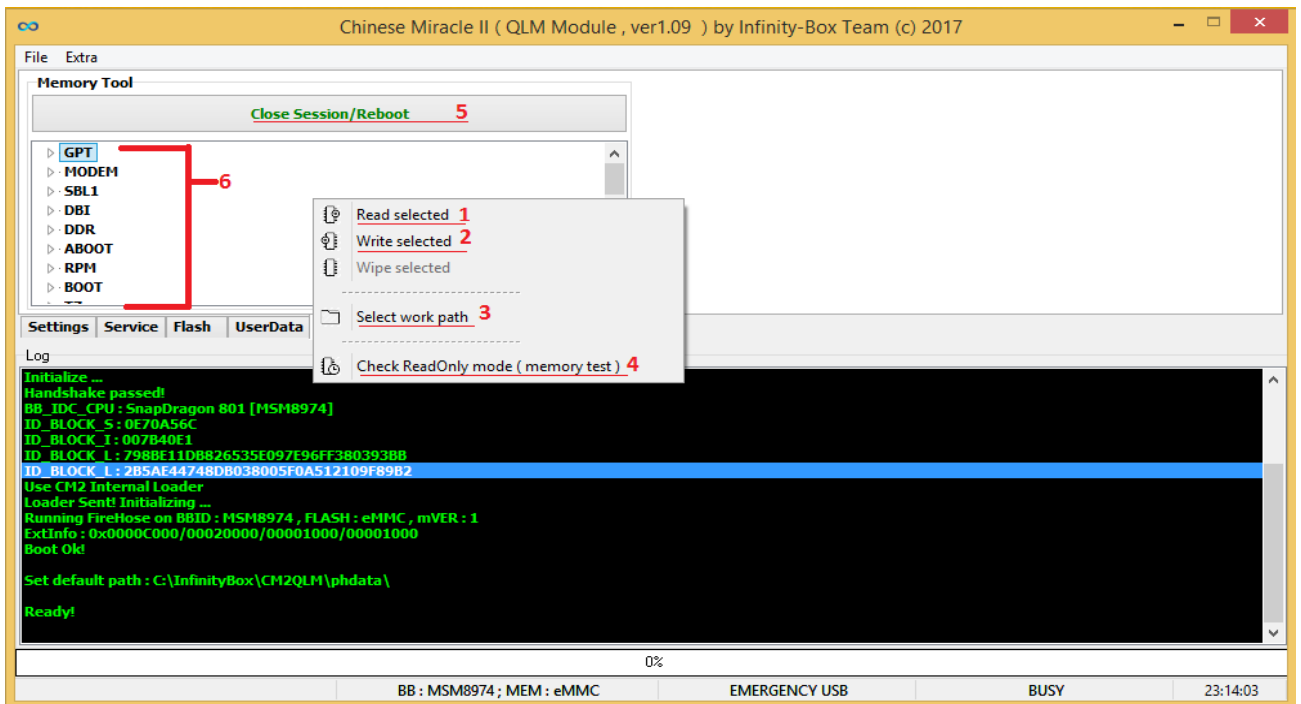
Double press on "**RD FILE**" field to open "**File Save**" dialog box.

You can press "**Cancel**" to make field empty.

If field is "**NOT set**" - partition will be **ignored**, if it selected for **READ** operation.

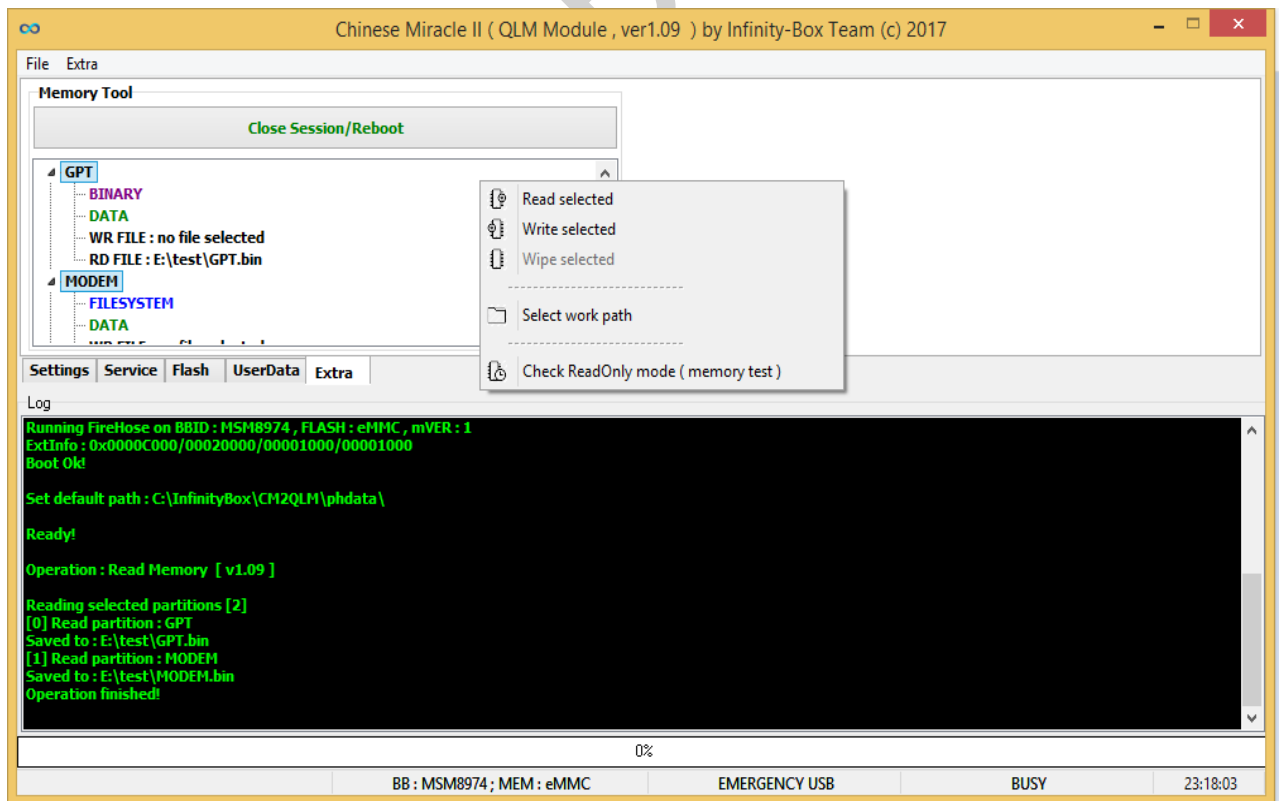
CM2 Memory Tool: Full Control in your hands (Info & Manual)

Operations Overview:



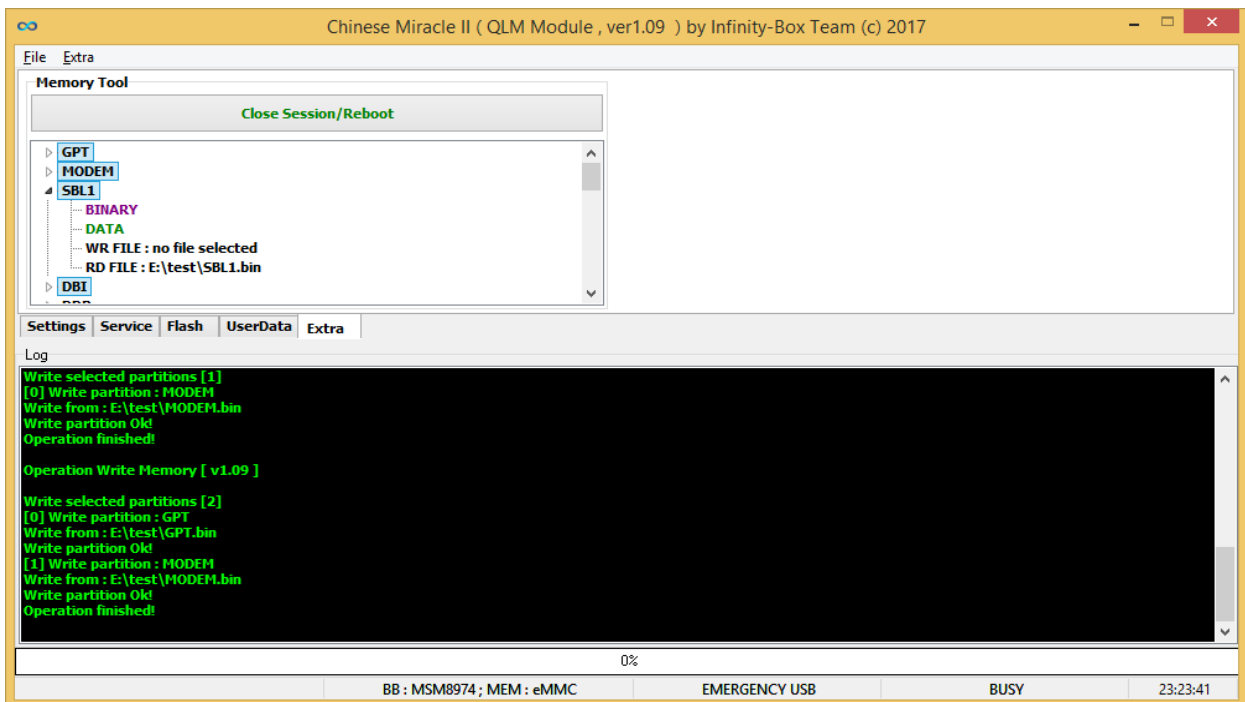
1. Read Selected

Read selected partitions from device (if "RD FILE" is set)

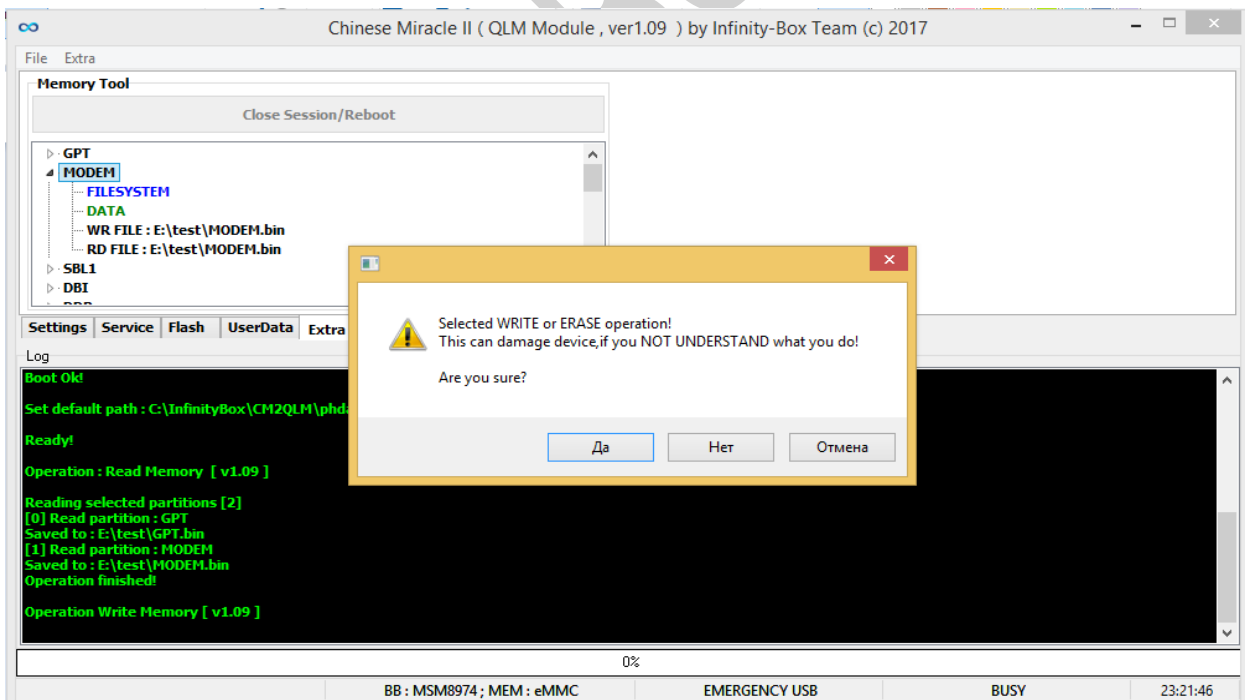


2. Write Selected

Write selected partitions to device (if “WR FILE” is set)



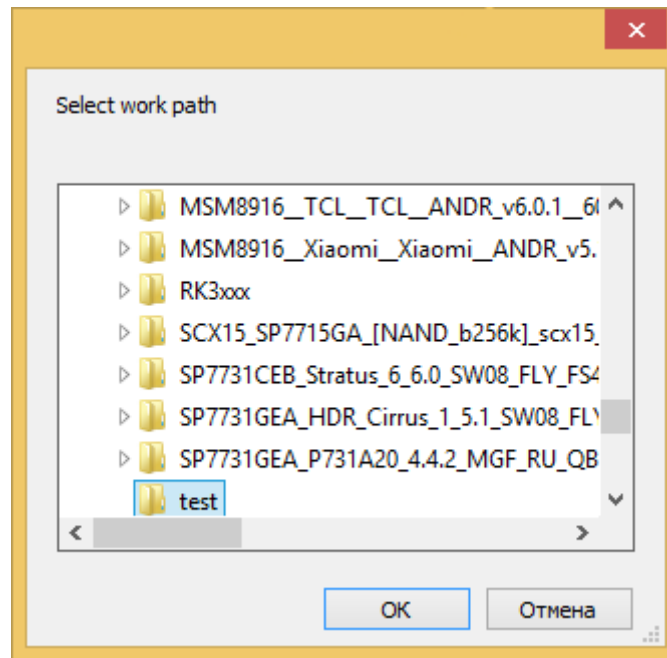
AT EVERY operation SW will ask about accept operation!



3. Set Work Path

Set path for READ operations (instead default one)

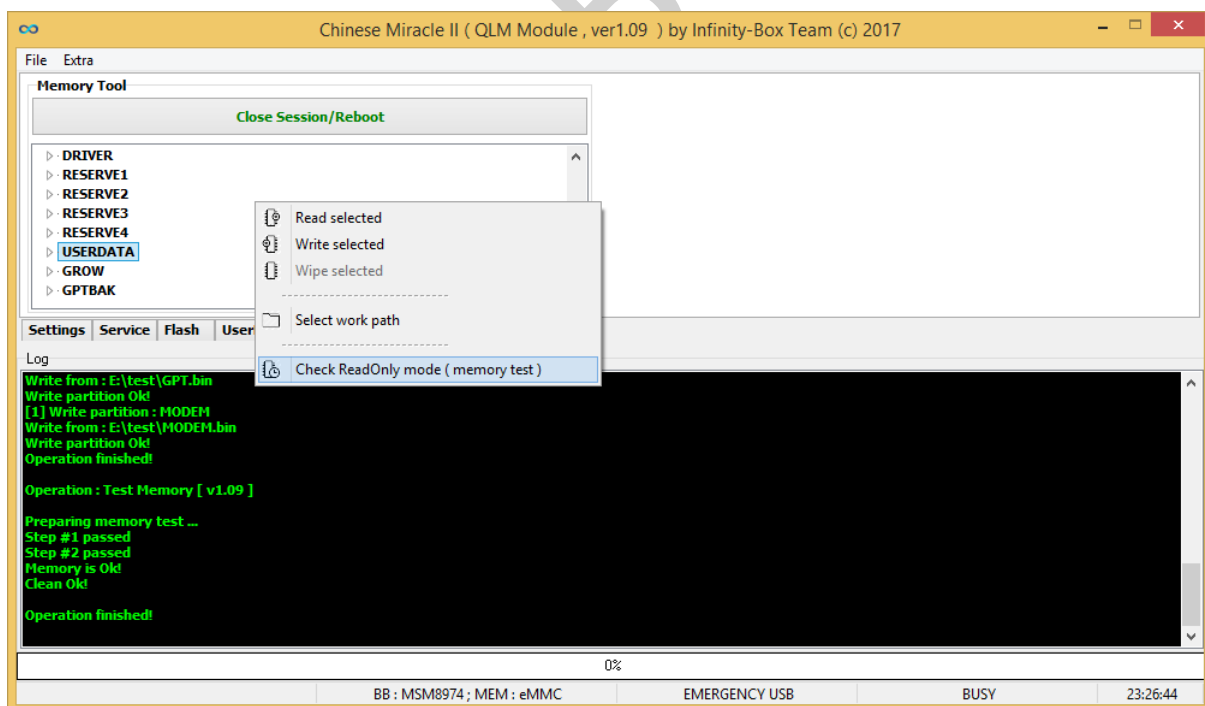
Useful for make full RAW copy or etc.



4. Memory Test

Make FAST memory test (Memory Read Only Test)

Test is completely safe, and not depend on selected partitions to avoid any user's mistakes.



5. Init MemTool / Close Session

Start / Close “Memory Tool” session. On close session device will be rebooted to charge/normal mode.

6. Main Workplace Window

Here user can select need partitions for desired operations, verify their state, set path for read and write data.

MULTIPLE partitions selection possible with **CTRL** (one-by-one) and **SHIFT** (ROW between START SELECTION and END SELECTION) keys holding on keyboard.

