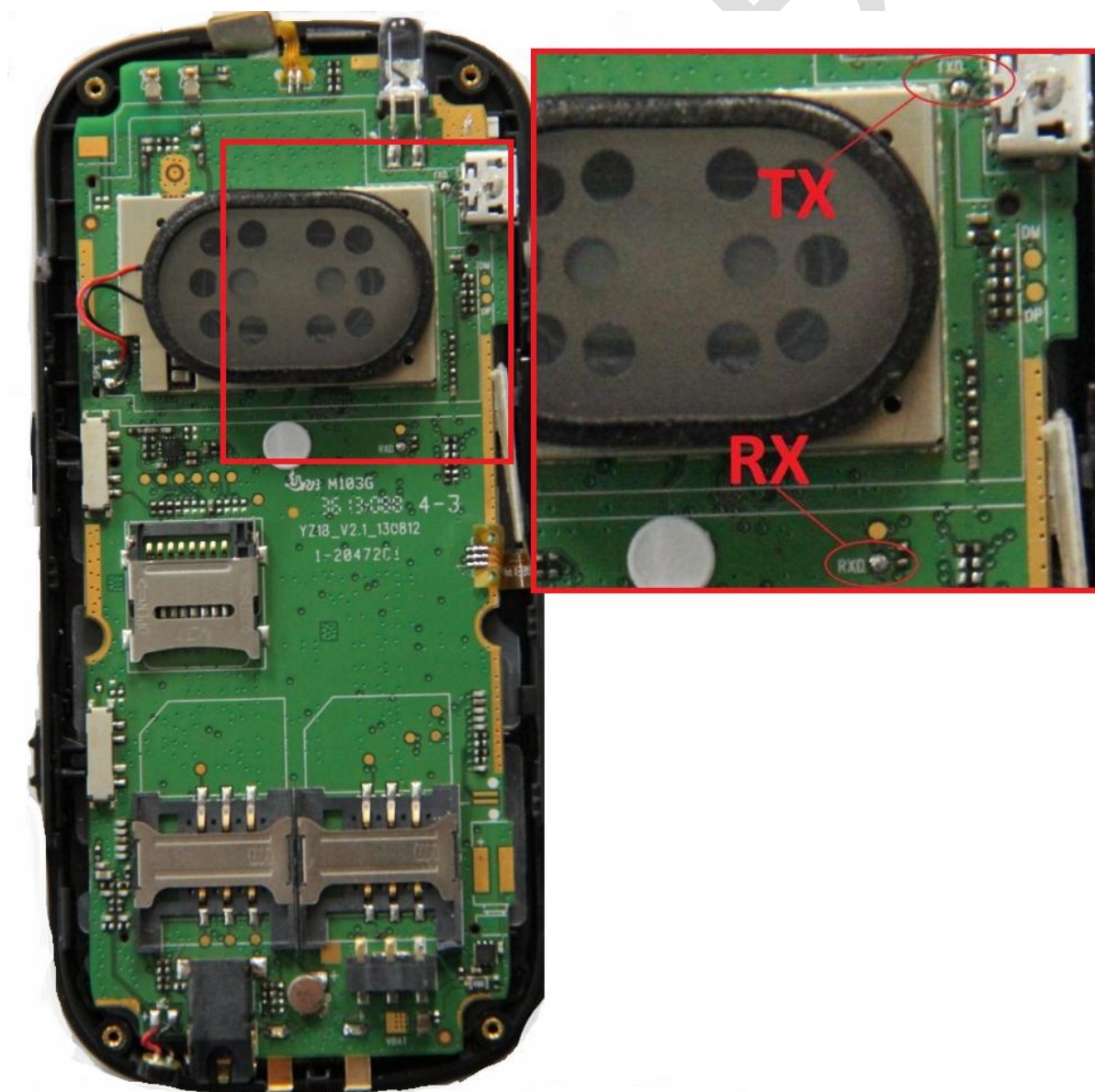


# SPD COM/UART CONNECT

## Rx/Tx pins :

On all boards with SPD chip can be found marked Rx/Tx Pins.



### Connect phone with Rx/Tx :

Solder wires to **Tx/Rx pins** , solder **GND pin** to any **GND** point.

If planned use **VPP** from Box – solder **VPP wire** to **BAT+**

### Connect phone with CM2SPD :

In case of use :

1. **VPP from box** – Select Com port in CM2SPD module.  
Select required operation  
When software starts seek phone – connect cable in box.  
**If operation not start in 2-3 seconds – remove cable, connect again.**
2. **Battery** - Select Com port in CM2SPD module.  
Connect cable in box.  
Select required operation  
When software starts seek phone – insert battery.  
**If operation not start in 2-3 seconds – remove cable, connect again.**