

Table of Contents

General information.....	1
Operation modes.....	1
Drivers Installation.....	1
Software Installation.....	2
Software Activation (addon for Infinity-Box dongle).....	4
Read dongle identification, serial number (S/N).....	5

General information

Infinity-Box **CDMA Tool** is a software to service different types of CDMA phones.

Infinity-Box corporate web site:	http://www.infinity-box.com/
Infinity-Box CDMA Tool web site:	http://www.infinity-cdma.com/
Infinity-Box CDMA Tool download area:	http://www.infinity-cdma.com/download/
Sales department e-mail:	sales@infinity-cdma.com
Technical support e-mail:	support@infinity-cdma.com

Operation modes

Infinity-Box **CDMA Tool** works in two modes:

- ✓ Addon for Infinity-Box dongle (activation payment required, contact to sales@infinity-cdma.com)
- ✓ Standalone **CDMA Tool** dongle

Each operation mode has exactly the same functionality, number of supported models etc.

Drivers Installation

Protection dongle (smart-card) drivers should be installed.

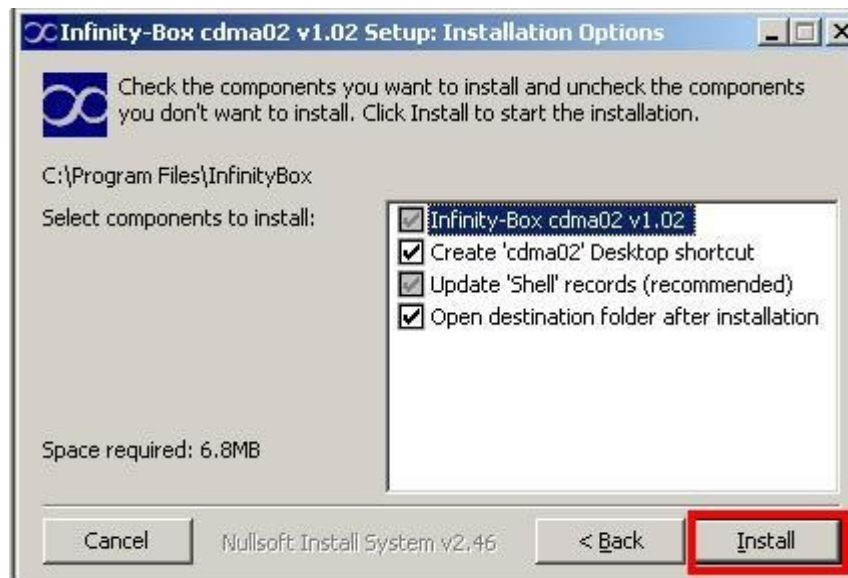
1. Visit <http://www.infinity-box.com/support.php>
2. Download and install drivers according to **I. Installation procedure** section (it's need to install smart-card drivers only, Unibox/FTDI drivers is not required).

Software Installation

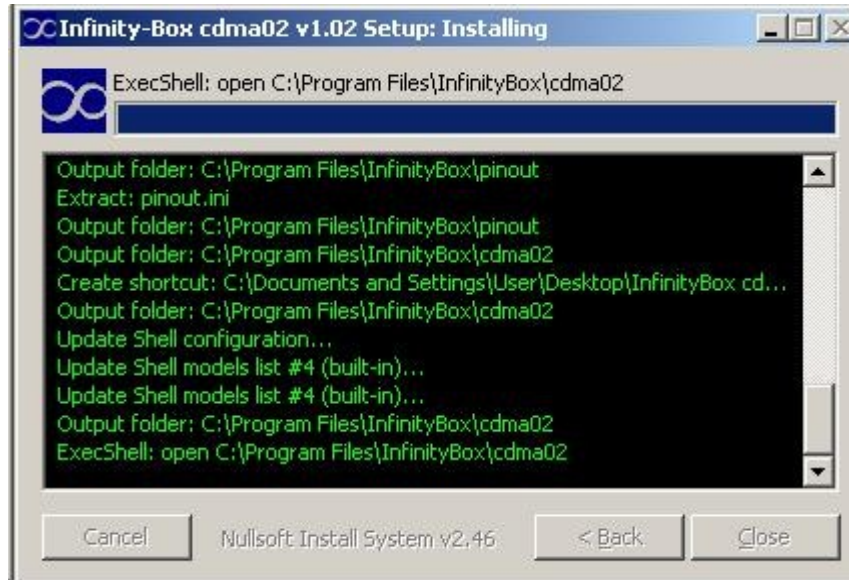
1. download software Installer: <http://www.infinity-cdma.com/download/>



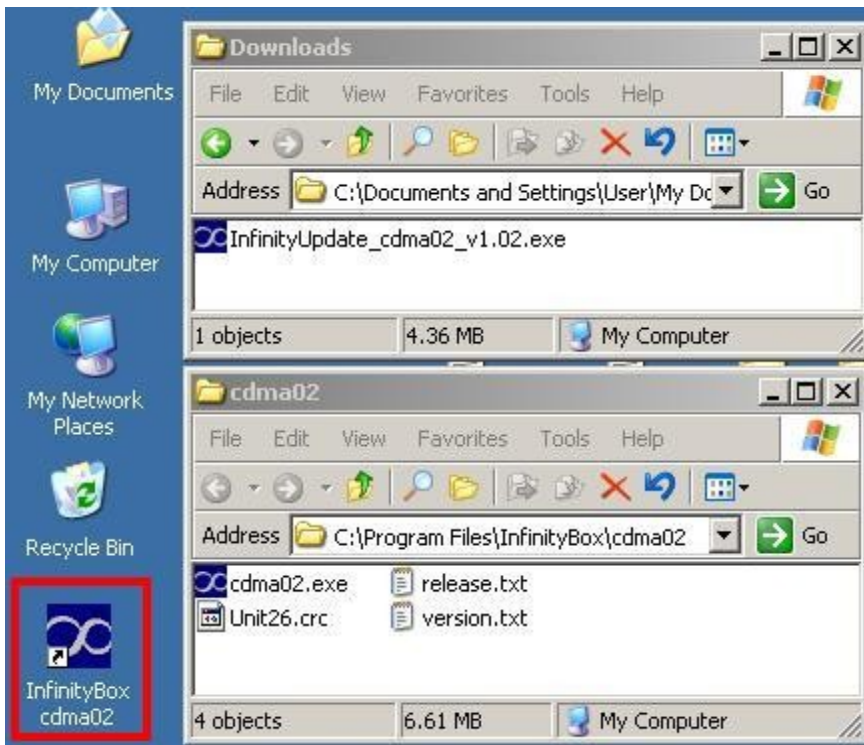
2. Check installation options, press "Install" button



- 3. Wait several seconds



- 4. Finally you will see folder with software and Desktop shortcut



- 5. If you have standalone dongle - you can run software and work right now. If you want to activate this software for your existing Infinity-Box - read activation instruction below.

Software Activation (addon for Infinity-Box dongle)

1. Contact to sales@infinity-box.com and make activation payment
2. Run Infinity-Box [Dongle Manager](#) (**v1.33 or newer**) and make "Read dongle serial number (S/N)"
3. Send Infinity-Box S/N information to cdma@infinity-box.com
3. Wait confirmation from support that your dongle activated
4. Run Infinity-Box [Dongle Manager](#) (**v1.33 or newer**) and upgrade your dongle firmware
5. Run Infinity-Box [Dongle Manager](#) (**v1.33 or newer**), read dongle S/N again and be sure that you have new module activated
6. Software ready to work

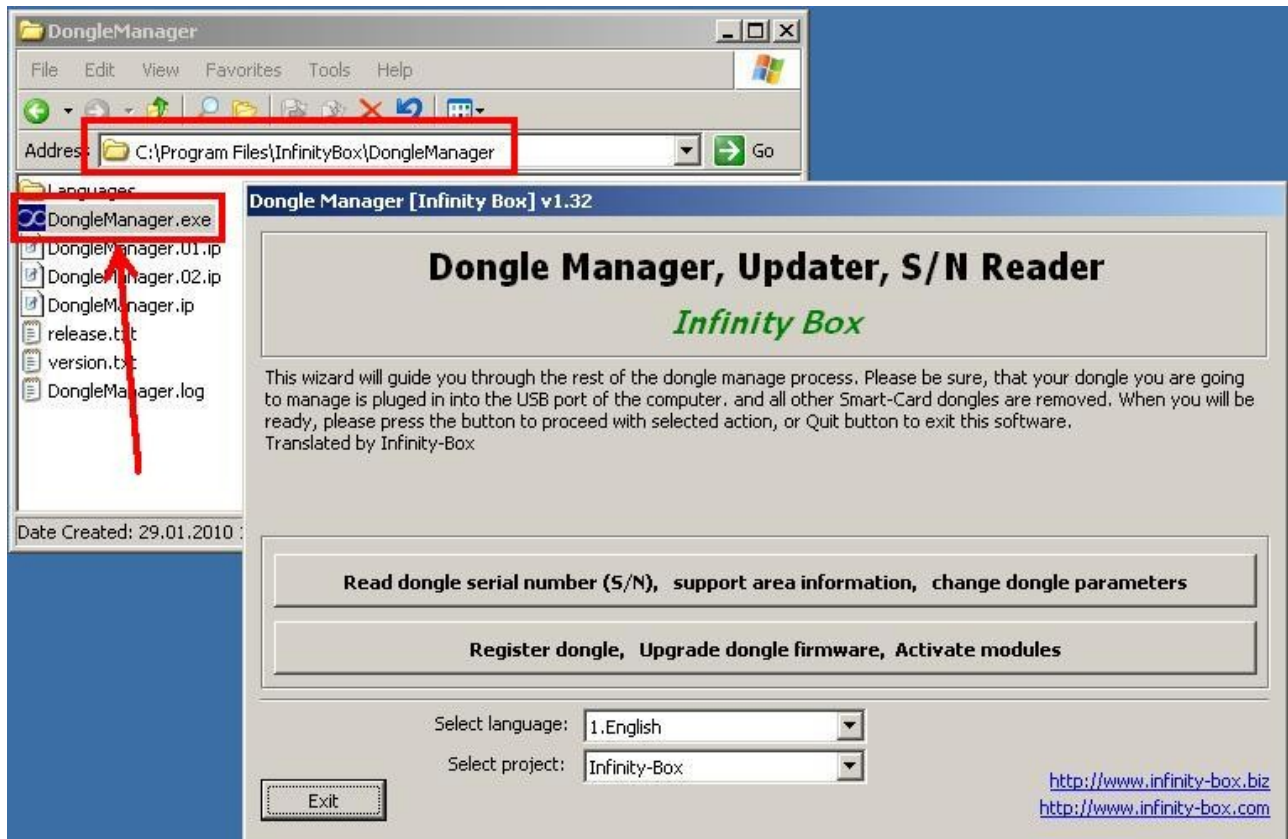
Dongle Manager: <http://www.infinity-box.com/download/index-1.php?dir=&file=DongleManager.rar>

CDMA Tool: <http://www.infinity-cdma.com/download/>

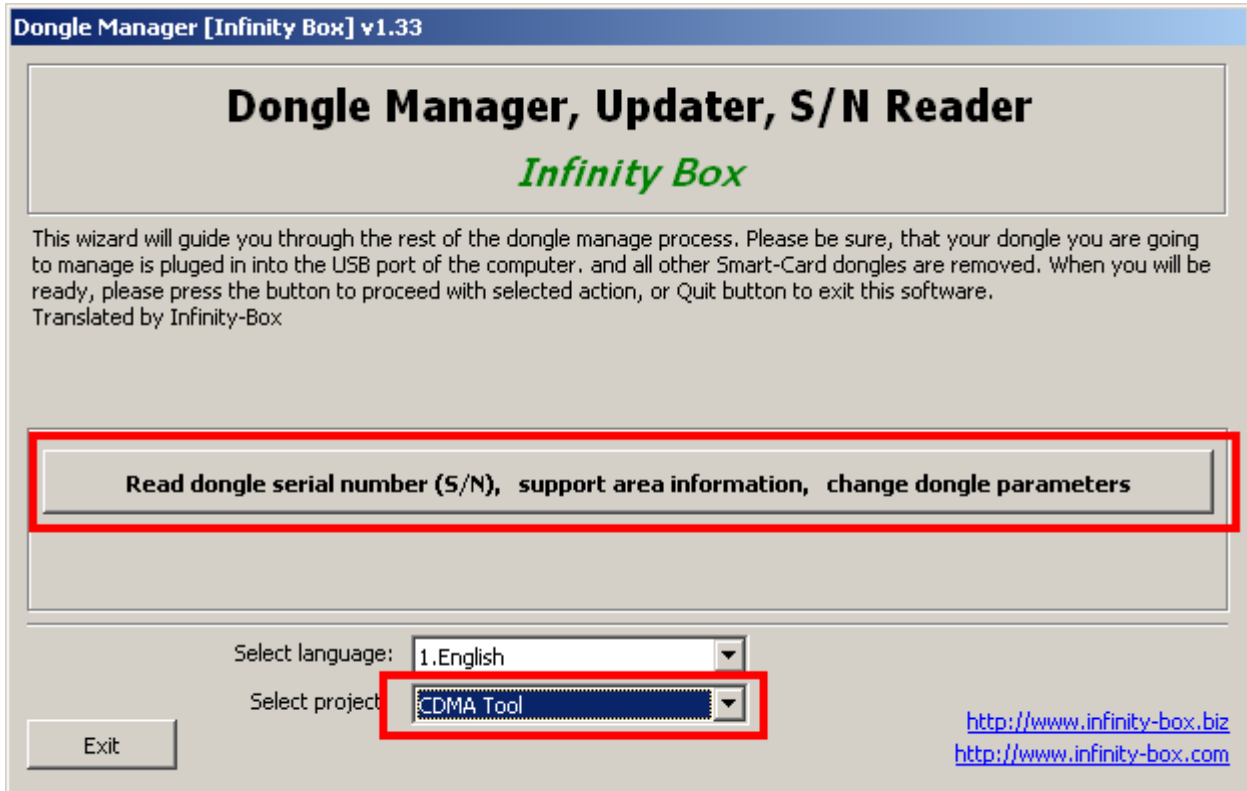
Read dongle identification, serial number (S/N)

In case of any problems with software and/or dongle functionality it is need to send information about your dongle identification data (serial number etc.) to support.

1. Download and run **Dongle Manager (v1.33 or newer)**: <http://www.infinity-box.com/support.php>



2. Select **CDMA Tool** project and press "Read dongle serial number (S/N)" button



3. Here is an example of dongle identification data

