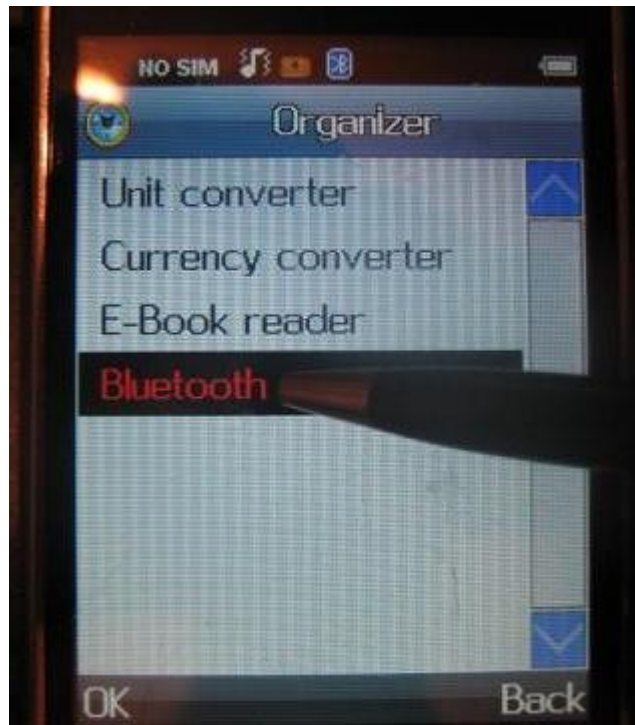


How to connect to phone via bluetooth

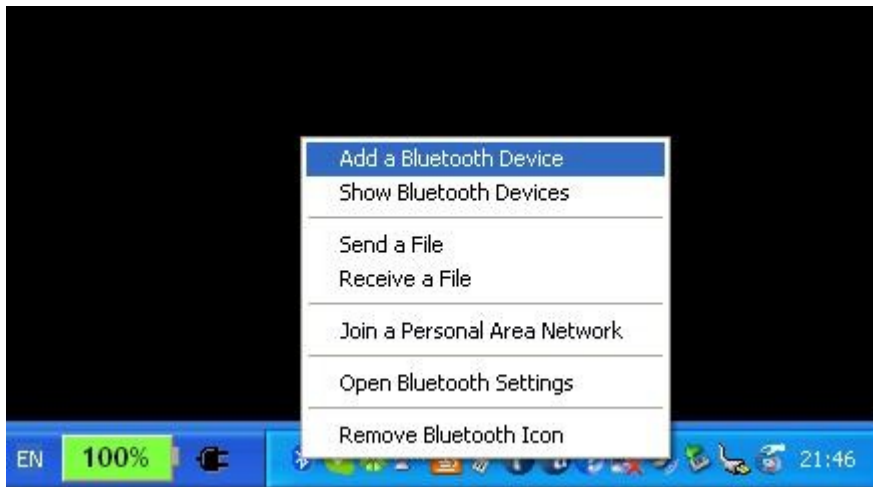
1. go to phone "Bluetooth" menu



2. Be sure that Bluetooth become switched on



3. go to PC Bluetooth settings



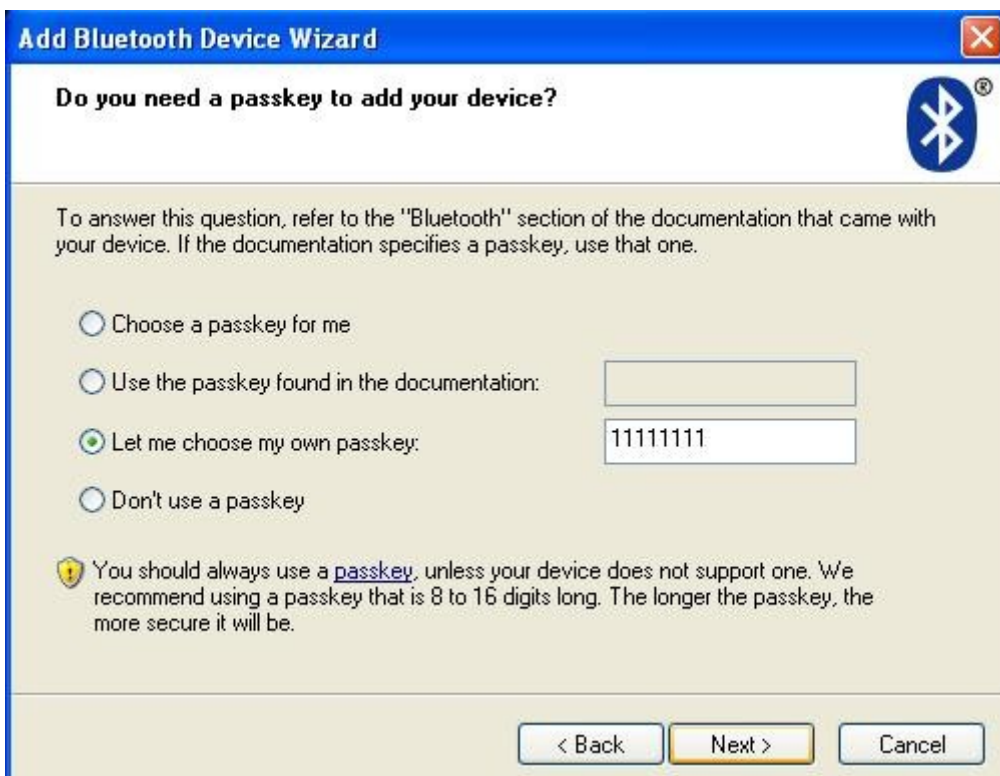
4. Add new bluetooth device



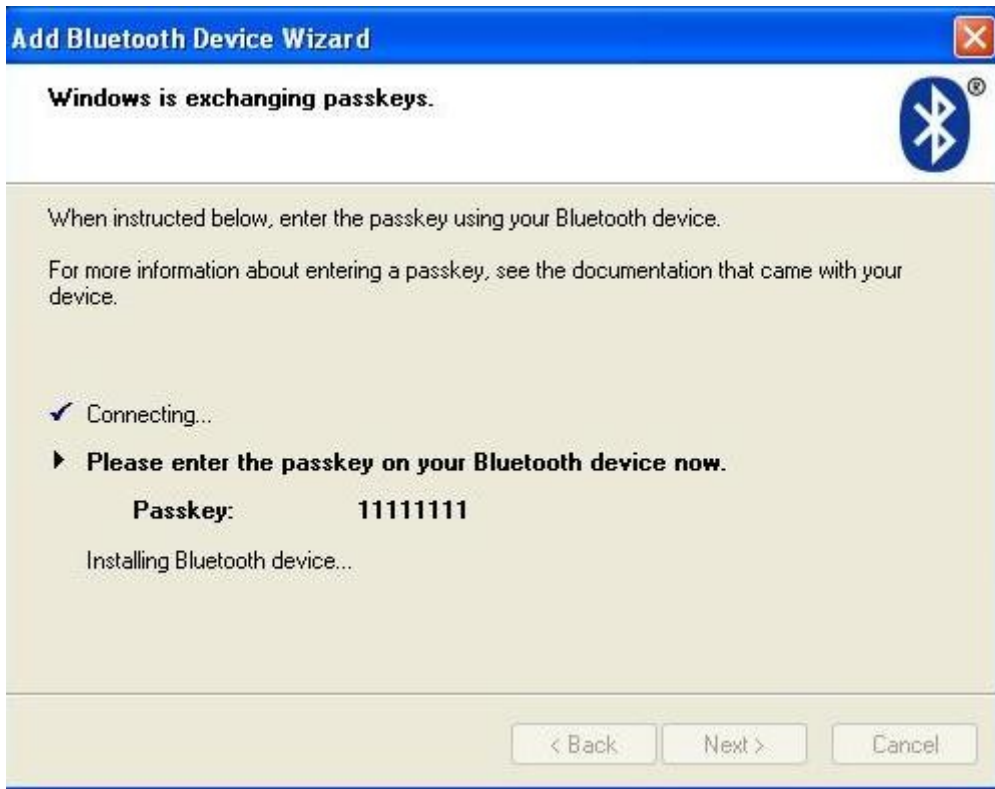
5. Select phone Bluetooth device



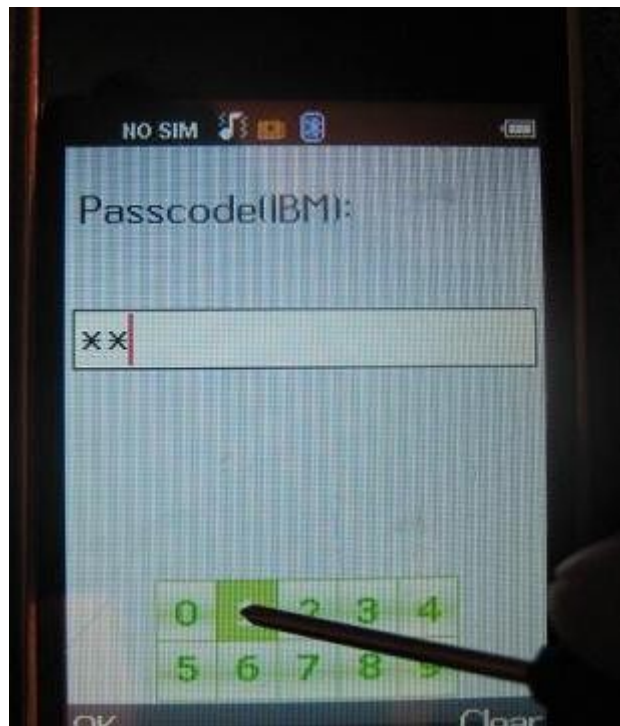
6. Enter "Passkey"



7. Pairing...



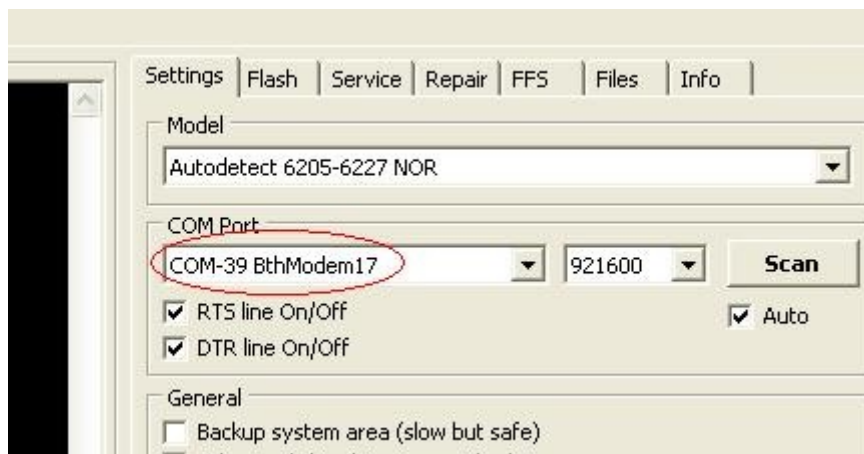
8. Enter the same "Passkey" again



- 9. Devices paired, you know device COM port: **remember COM port number for future use !**



- 10. Select COM port in software (see previous step)



11. Make what you need

